



WATER-PRO MODULAR S-60

By Eco-sistems watermakers

Carrer d'Horta 22 – 08203 Sabadell – Spain

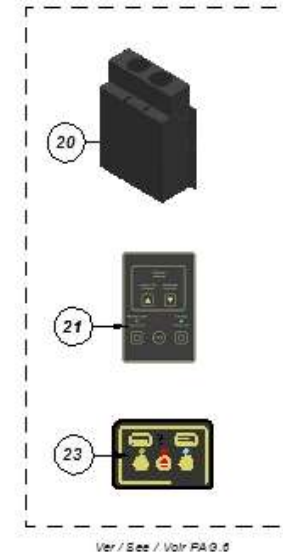
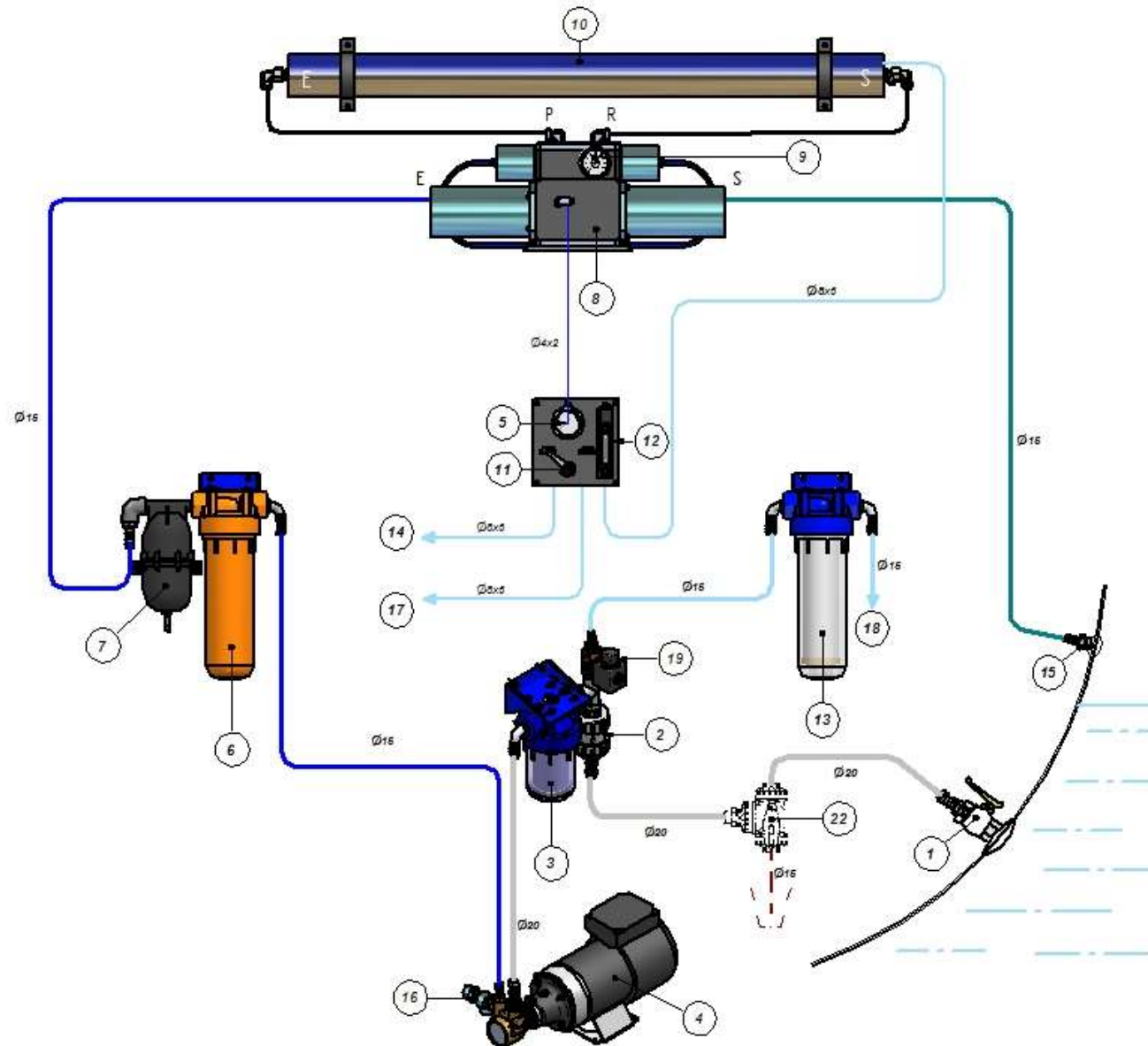
www.eco-sistems.com

SPECS WATER-PRO MODULAR S-60
Installation, packing list, dimensions, and options



Eco Sistems USA
2800 Marina Mile Blvd.
Fort Lauderdale, FL, USA, 33312
www.eco-sistems-usa.com
tel: +1 (954) 909-1845

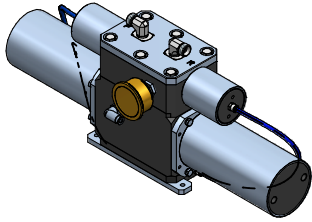
WATER-PRO MODULAR S-60 INSTALLATION



SYSTEM COMPONENTS

1. - Seacock valve to uptake the seawater
2. - Check valve
3. - Washable sea strainer filter
4. - Low-pressure booster pump
5. - Low pressure gauge
6. - 5 microns filter container
7. - Expansion vessel
8. - High pressure pump with energy recovery system
ST-18 CERAMIC
9. - High pressure gauge
10. - R.O. Membrane and vessel
11. - Three ways valve for the produced water
12. - Flowmeter production
13. - Anti Cl carbon filter
14. - Produced water output to the tank
15. - Brine discharge thru-hull
16. - Switch
17. - Direct produced water output (CONTROL)
18. - Boat freshwater input
19. - Fresh flush solenoid valve
20. - Power box
21. - Digital control panel
22. - (OPTIONAL) Three-way valve for wintering
23. - (OPTIONAL) Remote control panel

WATER-PRO MODULAR S-60 PACKING LIST



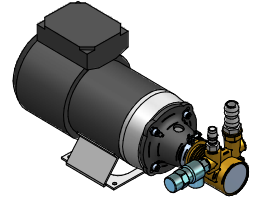
HIGH PRESSURE
PUMP ST 18



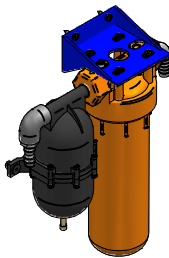
ELECTRONIC
CONTROL PANEL



POWER BOX



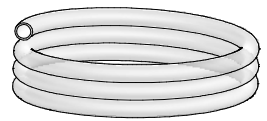
MOTOR PUMP



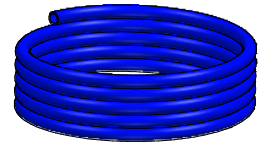
LOW PRESSURE FILTER SET



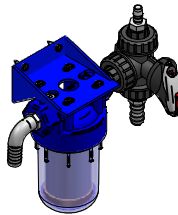
HYDRAULIC CONTROL
PANEL



HOSE CLEAR BRAID Ø20



BLUE TUBE Ø15X22



SEA STAINER SET



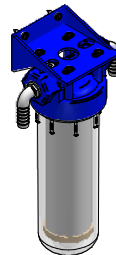
BLUE TUBE Ø6X4



POLYAMIDE HOSE
Ø4X2



MEMBRANE
CONTAINER



CARBON FILTER



POLYAMIDE HOSE
Ø4X2



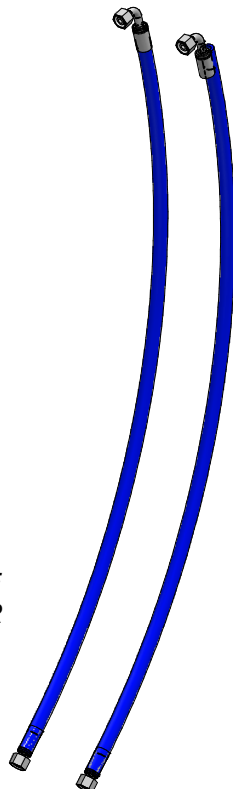
4 – HOSE CLAMP
16/27



10 – HOSE CLAMP
12/22



CONNECTOR Ø6 TUBE
X 1/4 BSP PLASTIC



2-HIGH PRESSURE
HOSE



ADAPTER 1/2 BSP X 3/4
BARB PVC

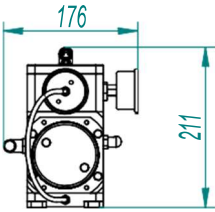
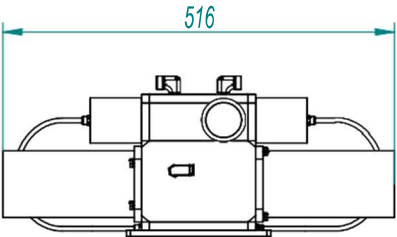


2-ADAPTER 1/2 BSP X
1/2 BARB PVC

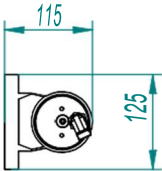
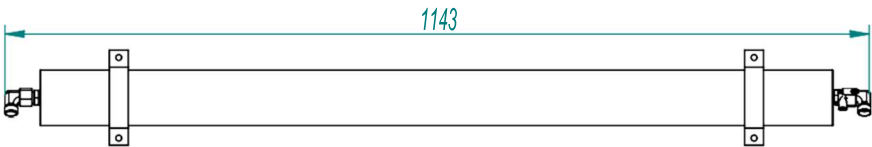


FILTER WRENCH

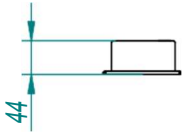
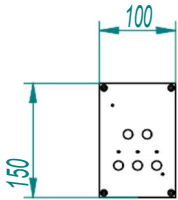
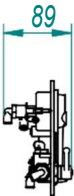
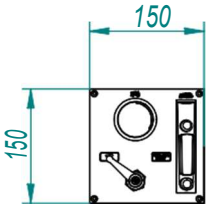
WATER-PRO MODULAR S-60
DIMENSIONS



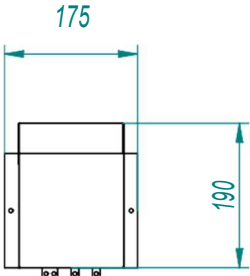
HIGH PRESSURE PUMP ECO-SYSTEMS ST-18



MEMBRANE CONTAINER

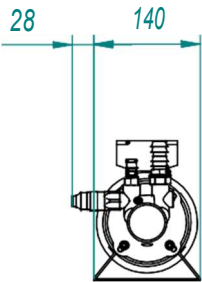
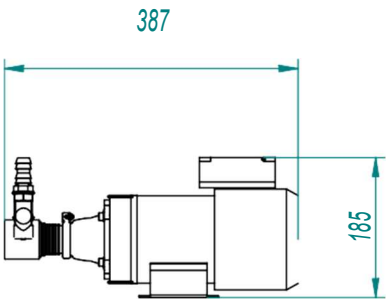


ELECTRONIC CONTROL
PANEL

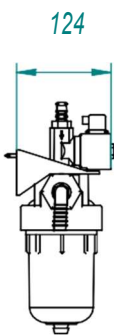
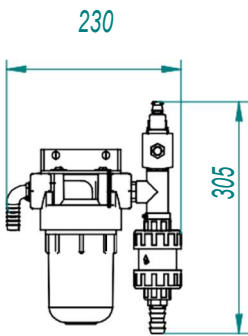


POWER BOX

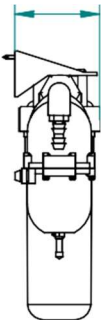
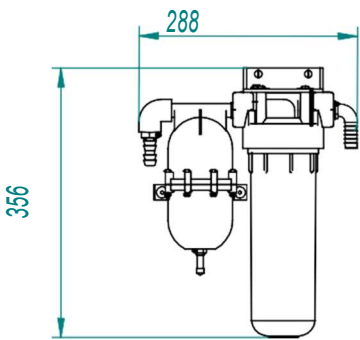
HYDRAULIC PANEL



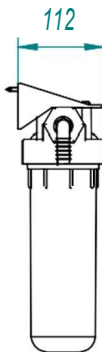
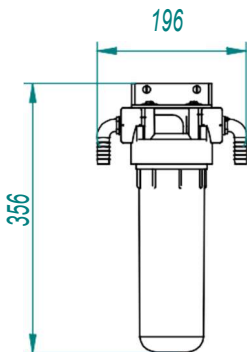
BOOSTER PUMP



SEA STRAINER FILTER



LOW PRESSURE FILTER SET



CARBON FILTER SET

WATER-PRO MODULAR S-60

SPECS



Electrical specifications

- 550 W Motor – 12 V DC consumption: 25 Amps, 350 W*
- 550 W Motor – 24 V DC consumption: 12,5 Amps, 350 W*
- 550 W Motor – 220 V AC consumption: 1,6 Amps, 350 W*
- Average consumption per litre: 6,4 W*

*The consumption is estimated and might have some variation depending on the water temperature, salinity and system installation.

Other specifications

- Booster pump minimum inlet pressure: + 0,05 bar
- Booster pump outlet pressure: 10 – 12,5 bar
- High pressure pump outlet pressure: 45 – 60 bar
- Feed flow: 600 litres / hour
- Average effective production: 60 litres / hour (+/- 10%)
- Conversion: 10%
- Rejected/permeated ratio: 9 : 1
- Membrane type: 1 membrane 25/40
- Sound test: 58 – 62 db

WATER-PRO MODULAR S-60

COMPONENTS' WEIGHT

COMPONENTS	WEIGHT
High pressure pump	13 KG
Membrane container set	6 KG
Motor set	9 KG
Stainer filter set	1.2 KG
Low pressure filter set	1.5 KG
Carbon filter set	1.2 KG
Hydraulic panel	0.8 KG
Power box	0.5 KG
Digital control panel	0.5 KG

STANDARD MODEL

- Automatic pressure regulation
 - Energy recovery high pressure pump
 - **Production control** – optimize the production depending on the water condition (temperature /salinity) by adjusting the inlet water
 - **Programming mode:** cycle of 1, 2 or 3 hours production finishing with a fresh flush
 - **Hydraulic indicators:** Flowmeter, low pressure gauge, high pressure gauge
 - **Automatic fresh flush:** 2 min temporized fresh flush that you activate with a simple button.
- During the flush, the speed of the motor is reduced by two in order to use a small amount of water.

Hydraulic control panel

This hydraulic control panel, included in the installation kit, allows to read the production and low pressure. Moreover, it is equipped with a three-way valve to send the produced water to the tank or to the kitchen.



WATER-PRO MODULAR S-60

OPTIONS



Remote control

Start, flush, and stop the unit from an easy access point.

Wintering valve

This valve allows you to winterize your unit the easiest way possible.



Maintenance kit

In this kit you will find all the spares you need to for one year navigation.

It includes two 5 microns filters, one rotary vane pump, one carbon filter and 250 g of membrane conservative.